

fi  
ft  
ee  
n



NORTHSHORE  
COMMUNITY  
FOUNDATION

*Celebrating 15 Years*

# fifteen



In 2007, the Northshore Community Foundation began with the pure intention of simplifying, organizing, and magnifying philanthropy on the Northshore. What has happened in the 15 years since has been remarkable. The generosity of our community has changed lives and brought people together as the work continues.



# Response

## it's where we come from

From the beginning, the Northshore Community Foundation was born from the need for a local response after a natural disaster, and we have excelled in that work ever since. In the months following Hurricane Katrina, the Baton Rouge Area Foundation saw the glaring need for local leadership, staff, funding, and services as our Northshore recovered from the unprecedented impact of the storm. In the months after opening, the Foundation distributed nearly one million dollars to local nonprofits still dealing with Katrina's wrath and our emergency response work was born.

Since then, in man-made disasters, natural disasters, and even a global pandemic, we quickly activate and respond, because immediate generosity matters.

Local, national, and international supporters have used the Foundation to funnel millions of dollars to our region trusting that we will direct it for the greatest possible impact.



**\$6 million**  
Amount of disaster relief funds distributed through emergency response work.

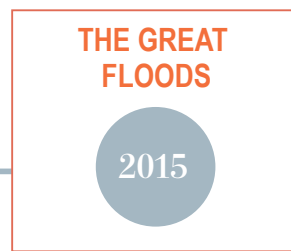
**2007-2008 – HURRICANE KATRINA**

– More than \$1.5 million deployed to help the Northshore rebuild from the devastating impacts of Katrina.



**2011 BP OIL SPILL** - The Foundation distributed \$700,000 to support the people, wildlife, and environment affected by the disaster.

**2012 HURRICANE ISAAC** – Granted \$200,000 to support local nonprofits in relief and response work in Tangipahoa and St. Tammany Parishes.



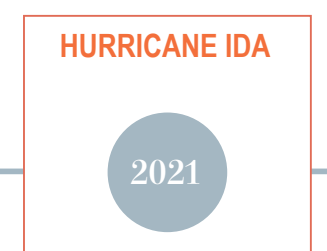
**2015 THE GREAT FLOODS** - Historic rain and flooding in our entire region caused the death of 13 people, left 40,000 people in need of rescue, and the destruction of more than 100,000 homes. In response, we granted nearly \$600,000 for relief and rebuilding in Tangipahoa, St. Tammany, Washington and St. Helena Parishes.

**2016 HURRICANE HARVEY** – Helping our Texas neighbors in need, we provided funding to “One Million Meals,” an effort of Blue Runner Foods to provide one million quality meals to hungry, flooded Texans.



**2019 HURRICANE LAURA** – Helping our neighbors again, working with our sister organization, the Community Foundation of Southwest Louisiana, we helped raise \$5.5 million to help rebuild from the devastation in southwest Louisiana.

**2020 COVID** – Financial support, meaningful encouragement, and protective supplies were the focus of our response to the pandemic, with more than \$500,000 to support our region in creative and uplifting ways.



**2021 IN FOCUS:** Hurricane Ida – Reminiscent of our roots in Katrina, when Hurricane Ida took direct aim at our region, we quickly activated our Weather Relief Fund and raised \$1.6 million to support emergency relief and long-term recovery from the impact of the storm. More than 100 grants have been made to support relief work and we continue to fund projects to aid that recovery.

# COVID Response Outcomes

## FOOD

**Grants** made to food pantries at the onset of the pandemic  
**\$140,000**

Days of meals delivered to **20 homebound elderly neighbors** **100**

**20,809** Meals provided to school-aged kids, families and food pantry clients.

**Additional meals** safely handed out through churches, childcare centers, day centers and emergency shelters:  
**38,366**

**1,000** Meals from **local restaurants** delivered to frontline medical workers in **7 Northshore hospitals**

## SHELTER

**Mitigated impending evictions** for families from their homes  
**102**

**75** Families **housed in hotels and shelters** who would have had no place to lay their head

**Kept the lights on** for **13** families who would have been in the dark and without power

## SUPPORT

**40** "Happy Bags" created with snacks and toys delivered to **at-risk youth used as a social service** check in

**TWO** Full-time counselors hired to do **human services counseling and outreach** in rural areas

Purchased **computers and software** to offer telehealth for **75** homebound people with developmental disabilities

**22** **Trauma sessions** with abused children, some as young as 3 years old

**151** **Hours of support** given through phone, email and Zoom

**481** Points of **therapeutic contact** with those struggling right now

## HEALTH & WELLNESS

**\$60,000** Financial relief given to **local hospitality workers** who lost 100% of their income when the pandemic hit

**Sanitizing supplies** given to reopen safely: PPE, masks, thermometers, disinfectant and towels  
**53 orgs**

**660** Packages of **diapers, wipes and baby formula** given to new mothers for their infants

**Educational packets** printed and distributed to low-income kids without Internet access to complete their stay-at-home studies  
**200**

**35** Specialized cancer **patient care boxes** with nutrition and medicine and 100 antibody tests delivered for the community

**60** Provided hours of **live streaming video** and seminars to keep our neighbors feeling connected

# NCF Invests \$1.2 Million in IDA Response and Recovery

## EMERGENCY RESPONSE

**\$150,000** in the days following the **storm** to support emergency relief services like distribution of gasoline, hot meals, nonperishable food, water, and cleaning/hygiene supplies

**30,550 gallons** of fuel were provided free of charge in the height of shortages, most dedicated to healthcare providers and first responders.

**31,000 hot meals** were provided to residents in the **two weeks** following landfall.



## NONPROFIT SUPPORT

**\$150,000** helped local nonprofit organizations make **building repairs** or replace lost equipment so they can **resume operations** and deliver **critical programs** to local residents.

**\$35,000** for **critical generators** provided in hard-hit Tangipahoa to continue vital nonprofit operations.

## HOUSING SUPPORT



**\$200,000** funded housing programs, including temporary housing assistance, home repairs and rebuilding supplies, and legal work for homeowners and tenants.

**125 seniors** were quickly assisted with **getting back into their homes**.

**25 homes** completely repaired to livable conditions in the first 90 days after the storm.

**25 Habitat** homeowners were assisted to keep them in their homes while **the damage was being repaired**.

## FINANCIAL ASSISTANCE



**\$300,000** in **direct financial assistance** through grants provided to individuals and families in the region so they could recover from the hardship caused by Ida's impact.

This support got people **back to work** and students back to school so they could quickly put the damage and devastation from Hurricane Ida behind them

## LONG TERM IMPACTS

Research shows that there is a marked increase in completed suicides **within a two-year window** following a disaster. In our region, there has been an average increase of **41%** of completed suicides in the two years following local disasters, including Hurricanes Katrina, Gustav, Isaac and the 2016 March floods.

The long-term effects of disasters on public health, especially mental health, has a **staggering impact on the well-being** of our people.

We have committed more than **\$400,000** moving forward as we recover from the disaster.





## we are better together

Creative alliances are at the root of all we do. Bringing together those that share a common purpose simply makes sense. Donors who support the same cause, organizations serving similar missions, experts on subjects that matter to the region—we work to get them around the same table and in dialogue with each other. We know the needle moves in a positive direction when we partner together and the results speak for themselves.





**EXCEPTIONAL LIVES**

Launched in 2017, we helped create a virtual platform that is a trustworthy and easy to use resource for Louisiana families and children with disabilities. The ‘How-To’ Guides walk parents through complicated and often overwhelming processes while the ‘Resource Directory’ provides information on more than 1,000 resources available in the state.

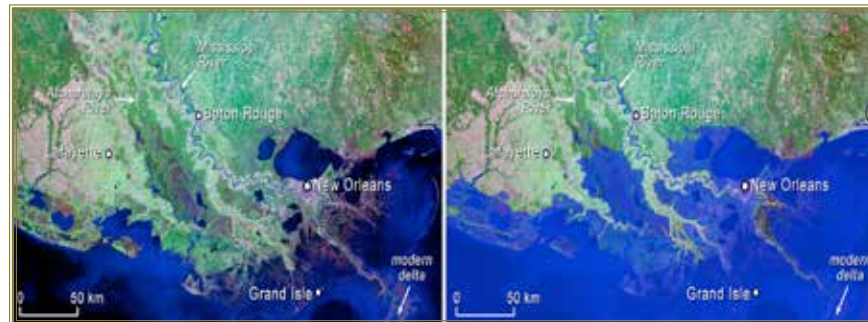
**FAMILY PROMISE**

Responding to the growing challenge of homelessness on the Northshore, in 2015 the Foundation and partners researched, designed and launched Family Promise St. Tammany to serve families with children who need temporary shelter and a safe place to lay their head. As an efficient and cost-effective faith-based model, the St. Tammany affiliate is now working with partners in Tangipahoa to launch in a second parish in our region.



**NORTH OF YOUR EXPECTATIONS**

A partnership of organizations who care about the quality of life on the Northshore drove a community-wide initiative that created an aspirational brand and identity for our region. The Northshore is one of those rare places that combine quality of life with accessibility, a progressive business climate with natural beauty, and vibrant culture with community.



**WATER SYMPOSIUM**

In a somewhat prophetic gathering, in 2013 the Foundation hosted a gathering of scientists, public policy makers and community leaders to learn about the expected impact of rising sea levels and disappearing coastlines on our Northshore region. The floods that our region has seen since has followed the predictions and highlight the continued need for action.



**SUICIDE TASK FORCE**

In 2011 with an alarming increase in suicides in St. Tammany Parish, the Foundation convened a community meeting of experts and people affected by suicide to change that trajectory. From that convening, a task force was launched which ultimately created concrete actions and developed resources for increased mental health services in our region.



**2021 IN FOCUS FACTS FROM THE FRONTLINES**

With Covid fatigue challenging our region, we set out to address confusing and often conflicting information about Covid and its impact on our health care system. With participation from medical leadership from every hospital on the Northshore, we hosted a virtual convening attended by more than 100 community leaders to share unfiltered facts directly from our local medical community.

# nonprofit support

## helping the helpers

The hundreds of nonprofit organizations serving this region are fundamental to all that we value and love about our four-parish region. They protect our environment, care for the most vulnerable among us, and enrich our lives in meaningful ways. Training, supporting, mentoring, and rewarding the tireless people who run these organizations is essential to us, as the region is better because of them.







**NORTHSHARE**

Anchored by the Coatney Center for Philanthropy, Northshare is a regional, first-of-its-kind nonprofit hub created to share ideas, resources, and energy as we work together for the common good. More than 50 organizations and 400 people utilize the space each year.

**DICK KNIGHT AWARD**

In honor of the late Richard F. “Dick” Knight, a founding and beloved board member, each year the Foundation recognizes a local nonprofit leader with a \$5,000 award for their service and commitment. Award winners include Reverend L. Stephen Holzhalb III of Christwood Retirement Community (bottom), Ola Magee of the Regina Coeli Child Development Center (left), Myrna Jordan of Our Daily Bread in Hammond (right), and Dianne Baham of STARC in Slidell (top).

**VITALS**

An Economic Impact Study of the Pandemic on Northshore Nonprofits. The COVID-19 Pandemic impacted every sector, demographic, and population in the world and our local nonprofit community was no exception. To assess that impact and determine how best to serve them moving forward, our Foundation engaged researchers at Southeastern Louisiana University and commissioned an in-depth study into the economic impact and short- and long-term health of our Northshore nonprofit sector.



**2021 IN FOCUS: CHEVRON FELLOWS LEADERSHIP DEVELOPMENT**

The Chevron Community Fellows program focuses on a small group of community leaders who serve mission-based organizations and works to empower them to make a greater impact on their organizations and the Region as a whole. The individuals selected to participate in this program have demonstrated a commitment to serving the Northshore while also having a broad base of transferable skills with a willingness to work collaboratively toward shared goals.



## foundation nonprofit members

American National Red Cross - Southeast  
Basket of Hope  
Catholic Charities Archdiocese of New Orleans  
Center of Hope for Tangipahoa  
Child Advocacy Services  
Children's Advocacy Center Hope House  
Children's Museum of St. Tammany  
East St. Tammany Habitat for Humanity  
Family Promise of St. Tammany  
Habitat for Humanity St. Tammany West  
HeartGift Foundation  
Hospice Foundation of South  
Innovation Labs  
James Samaritan  
LA Methodist Children's Home  
Lake Pontchartrain Maritime Museum  
Leukemia and Lymphoma Society - LA/MS Chapter  
Liberty Restoration Community Development Foundation  
LOPA Foundation  
Mary Bird Perkins Cancer Center  
Miracle League Northshore  
NAMI of St. Tammany  
New Heights Therapeutic Riding Center  
New Orleans Mission

Northlake Homeless Coalition  
Northshore Families Helping Families  
Northshore Food Bank  
Northshore Humane Society  
Northshore Technical Community College  
OPTIONS  
Ponchartrain Conservancy  
Regina Coeli Child Development Center  
Richard Murphy Hospice House  
Samaritan Center  
Solomon Episcopal Conference Center  
St. Francis Animal Sanctuary  
St. Scholastica Academy  
St. Tammany Council on Aging  
St. Tammany Hospital Foundation  
STARC of Louisiana  
The Good Samaritan Ministry of St. Luke  
United Way SELA  
Women's Center for Healing  
YMCA St. Tammany West  
Youth Service Bureau

# leadership

### 2021 BOARD OF DIRECTORS

Lisa Wilson	John Finan
M. Todd Richard	Wayne McCants
Greg Pellegrini	Jill Donaldson
Danny Shaw	Dave Kronlage
Chris Kenny	Alexis Ducorbier
Fay Bright	
Chip Lavigne	<b>Chairman's Council</b>
Marty Mayer	Maura Donahue
Patti Elish	Jimmy Maurin
John Baldwin	Bill Baker
Jenifer Besh	William Boudreaux
Michael Burris	



### FORMER BOARD OF DIRECTORS

Johanna Averill	Richard Knight
Stephanie Berault	Sue Lavin
Joel Bruno	Debra Neill Baker
Timothy L. Carpenter	Ron Newson
J. Scott Chotin	Sharron Newton
Lisa Fitzmorris Clement	Willie Paretto
Mimi Goodyear Dossett	Craig Paretto
R. Reid Falconer	Carlos "Chuck" Sabadie
Mayson Foster	Ellis Sampson
Kyle France	Carl Schneider
Scott Gutterman	William Trist
Joseph Jaeger	D. Randolph Waesche
Martis Jones	



# Philanthropy

simplified, organized & magnified

Philanthropy is fueled by passion, not paperwork. That is why our Foundation offers systems and an infrastructure to handle the administrative details while leveraging that work for the maximum impact. Our Funds act as “charitable checkbooks” so our Fundholders can focus on what matters to them.

18.4%

The 2021 investment gains returned into funds to fuel more giving

## types of funds at the foundation

### DONOR ADVISED FUNDS

Serve as a “Charitable Checkbook” where donors recommend charitable grants and the Foundation does the administration and paperwork to maximize their giving.



### CORPORATE ADVISED FUNDS

Offer an efficient approach to philanthropy and are ideal for businesses wanting to give effectively to multiple organizations and programs throughout the year.

### FIELD OF INTEREST FUNDS

Support evolving needs or a defined mission by focusing on an area of interest that is nearest and dearest to your heart. Your passion coupled with our process maximizes results.



### ORGANIZATION FUNDS

Are created by another nonprofit organization where charities set aside funds for specific programming, security against unforeseen hurdles, planned growth, or as an investment strategy.



### DESIGNATED BENEFICIARY FUNDS

Supports specific organizations or initiatives and ensures that the selected entity will receive support regularly over a long period of time.

### 2021 IN FOCUS: CHICKS WITH CHECKS

Neighbors coming together to pool their resources and direct them to the needy is a powerful idea. In Slidell, that collective giving power goes by the name Camellia City Chicks with Checks and is dedicated to harnessing the power of generous women to improve lives in their community.



1906 Founders Endowment Fund  
 A Toast to Our Heroes Fund\*  
 ACCESS Fund  
 Active Partnership Fund\*  
 Adult STEM Medical Science & Research Fund\*  
 Amanda Shaw Foundation Fund  
 An Angel's Gift Fund  
 AWE News Fund  
 Baldwin Foundation Fund  
 Bankston Family Fund\*  
 Banner Cares Foundation Fund  
 Besh Family Fund  
 Bill and Susan Baker Fund  
 Bippo's Place for Smiles Fund  
 Bogalusa YWCA Fund  
 Bruce and Ellie Wainer Fund  
 C J Ladner Family Fund  
 Camellia City Kids Fun Fest Fund  
 Captain Vincent N. Liberto, Jr. Memorial Fund  
 Carol Ashton D'Angelo Memorial Fund  
 Carpenter Family Fund  
 Casey Family Foundation Fund  
 Catherine Farnsworth Gensler Foundation Fund  
 CGB / Zen-Noh Grain - Japan Disaster Relief Fund\*  
 Charles and Elizabeth Goodyear Fund  
 Chemo Beanies Cares Foundation Fund\*  
 Chesterton Academy of Divine Mercy Educational Fund  
 Chevron Youth Program Fund  
 Christwood Foundation Fund  
 Christwood Fund  
 Claiborne Hill / Covington Gateway Project Fund\*  
 Claire M. Moss Memorial Fund  
 Cleco Community Fund  
 Community Arts Enrichment Fund  
 Cory Family Fund  
 Covington Rotary Foundation Fund  
 Crawfish Cookin' for a Cause Fund  
 Creative Relief Northshore Fund  
 Cribs for Kids Fund  
 D.A. Montgomery's Crime Prevention Fund  
 Dale and Sharon Mahnke Charitable Gift Fund\*  
 Danny and Susan Shaw Fund  
 Darlene Duda Fund\*  
 Dave and Angelea Kronlage Fund  
 DFC's Driving FORE Charity Fund  
 Donahue Favret Contractors Fund

Doyle Coatney Foundation Fund\*  
 EWE Fund  
 Excelling Youth Fund  
 Family Promise Day Center Fund\*  
 Family Promise Development Fund  
 Fay and Phelan Bright Endowment Fund  
 Fennelly Sanchez Fund  
 FIRST Program Fund  
 FMT Charitable Fund

**171 Funds**  
 With unique passions, people and purposes to better our region.

Founders Forum Fund  
 Fresh Start Fund  
 Friends of CRT Fund  
 Fund for Bogalusa  
 Gardner Family Fund  
 GKS Fund  
 Grant's Gift Foundation Support Fund  
 Greg and Lisa Pellegrini Fund  
 Greg Zelden Foundation Fund  
 Gulf Relief Foundation Fund\*  
 Gundlach Family Charitable Fund  
 Hammond Area Recreation Fund  
 Hands That Touch Hearts Fund\*  
 Harvey Relief Fund\*  
 Hayden Fund for Addiction Recovery Fund\*  
 Heavenly Foundation Fund\*  
 Henry and Gail Hood Fund\*  
 Hero to a Hero Fund\*  
 Hero's Farewell Fund\*  
 Hoops for Kids Fund  
 Hope House Fund  
 Hospice House Fund  
 HOYST Fund\*  
 Innovation Labs Fund\*  
 J. Scott Chotin, Jr. Northshore Family Community Fund  
 JAA Foundation Fund  
 Jack and Maura Donahue Fund

Jeremy Hebert Defibrillator Fund\*  
 Jinx Vidrine Legacy Foundation Fund  
 John and Patricia Finan Fund  
 John Tracy Laborde Memorial Fund  
 Kenny and Jennifer Ladner Fund  
 Kickin' Parkinson's Fund\*  
 Kids in Need During Disasters Fund  
 Kim and Chris Kenny Family Fund  
 Kids in Transition Fund\*  
 Lake Pontchartrain Basin Foundation Fund  
 Land Trust for Louisiana Operating Reserve Fund  
 Land Trust for Louisiana Stewardship Fund  
 Larry and Connie Galloway Fund  
 Law Enforcement Appreciation Fund  
 League of Women Voters of Louisiana Education Fund\*  
 Legislator's Charity Fund  
 Lucia de Conz Foundation Fund\*  
 Mandeville A.R.T. (Art, Recreation and Treasures) Fund\*  
 Mandeville Cares Fund  
 Mandeville Recreation Endowment Fund  
 Marsala Cultural Fund  
 Mayer Family Fund  
 MILNE Fund\*  
 NCF Youth in Philanthropy Fund  
 North Cross Fund  
 North of Your Expectations Fund  
 Northshare Fund  
 Northshore Cajun Army Fund  
 Northshore Charity Cards Fund  
 Northshore Community Capital Fund\*  
 Northshore Emergency Relief Fund  
 Northshore First Responders Fund  
 Northshore Food Bank Fund  
 Northshore Hurricane Isaac Recovery Fund\*  
 Northshore Legislators Charity Fund  
 Northshore Weather Relief Fund  
 Notes for Education Northshore Fund  
 Our Turn Northshore Fund\*  
 PamLab Corporate Fund\*  
 Parette Family of Dealerships Fund  
 Pat Brister Legacy Fund  
 Public Art for Covington Fund\*  
 Recreation District 16 Fund\*  
 Rich Mauti Cancer Fund\*  
 Richard Family Fund  
 Robin and Pamela Mingo Fund

Romona Forbes Donor Advised Fund  
 Rotary Club of Slidell Northshore Endowment Fund  
 Run Gulf Coast Fund  
 Safe Haven Support Foundation Fund  
 Sam and Jill Giberga Family Fund\*  
 Scott Family Fund  
 Second Harvest Food Bank Fund  
 Shelby P. LaSalle, Jr. Fund  
 Sibley Family Fund  
 Skipper Fund\*  
 Slidell Area Recreation Fund  
 Slidell Women's Giving Circle Fund  
 Songy Foundation Fund  
 SOS - An Abita Beer Charitable Fund  
 St. Joe Estates Residents Assistance Fund  
 St. Tammany Economic Prosperity (STEP) Fund  
 St. Tammany Infrastructure Fund  
 St. Tammany Parish Development District Facility Fund  
 St. Tammany Parish Justice & Mental Health Support Initiative Fund  
 St. Tammany Pearls Fund\*  
 St. Tammany Veterans Fund\*  
 STARC Endowment Fund  
 STCF General Fund  
 Stich Memorial Fund\*  
 Stirling Properties Foundation Fund  
 Stirling Properties Support Fund  
 Stirling Stewardship Fund  
 STP Cares Fund\*  
 STPPS Educational Foundation Fund  
 Strategier Foundation Fund  
 ThriveAbility Fund\*  
 TLC - Teen Lives in Crisis Fund  
 Tom and Sue Lavin Fund  
 True Body Kids Charitable Fund\*  
 Voelkel McWilliams Construction Fund  
 We Lift You Up Fund\*  
 Will and Shelley Boudreaux Fund  
 Wilson Family Fund  
 Women's Center for Healing Fund  
 Workforce Housing Opportunities Fund\*  
 World of Wonder (WOW Fund)  
 YEA Northshore Fund

\* Denotes inactive funds



## the future is bright

Protecting and enhancing the future of all that is wonderful about the Northshore starts with investing in our children. From scholarships to enrichment programs to financing their dreams, the Foundation makes young people a priority and the results are good for all of us.



**\$1.6 million**

Amount in scholarships and educational support granted to students furthering their educational dreams.



**SCHOLARSHIP RECIPIENTS**

Diamond Sampson is one of our scholarship recipients whose life was changed by this opportunity.

**YEA**

The Young Entrepreneurs Academy is a national program that transforms select 6th-12th grade students into highly trained, confident entrepreneurs. When local community leader Shelby LaSalle saw the value of the national model, he wanted one in his own backyard. Partnering with Southeastern Louisiana University and using the Foundation as the “boots on the ground,” the Northshore YEA has supported 102 St. Tammany & Tangipahoa students since 2015.

**STEM**

Math Counts and First Robotics Clubs are proven to engage students in creative uses of STEM thinking. Partnering with the Office of Naval Research at Stennis Space Center, the Foundation funded clubs in 13 St. Tammany Parish schools.

**YOUTH IN PHILANTHROPY (YIP)**

Teaching children the value of giving back is like planting seeds for philanthropy and that is why the Foundation works to encourage, highlight, and reward community service at a young age. Over 1200 hours were spent by kids, making their community better.

**SCHOLARSHIPS HELD AT THE FOUNDATION**

- Bogalusa Scholarship Fund
- Donna Kahl Manetta Scholarship Fund
- Gene and Betty Van Norman Scholarship Fund
- Greg Zelden Scholarship Fund
- Gymnastics Plus Christian Education Fund
- Irma Cry Education Scholarship Fund
- Music With A Mission Scholarship Fund
- Pat Brister Legacy Scholarship Fund
- Skipper Award In Memory of Ivan Zenon
- South Slidell Swimming Scholarship
- St. Tammany Cancer Fund
- Summers Legacy Foundation Scholarship Fund
- The Amanda Shaw Orchestrating Dreams Fund
- The Mill Town Players Fund
- Wilbert H. Reisig Scholarship Fund for Parkinson's Awareness
- Tulane Legislative Scholarships
  - Senator Donahue
  - Senator McMath
  - Senator Hewitt
  - Representative Wright

**\$220k**  
Amount in scholarships and educational support granted in 2021 to students furthering their educational dreams.



**2021 IN FOCUS – BRISTER GRANT**

Sydney Vander, a Slidell native, was the recipient of the First Annual Pat Brister Legacy Scholarship.

# N membership

## engagement makes it work

Through an innovative model focused on engagement, our work is driven by people, companies and partners that join in our vision of healthy, safe, beautiful, and vibrant communities. Membership is how we harness this power and focus it on the greater good.

- |  |   |  |
|--|---|--|
| 1012 The Gulf South Business Corridor              | Carolyn A. Chassee                      | Debra Combrell                               |
| Abita Brewing Company                              | Carolyn and David A. Briggs             | Debra Neill Baker                            |
| AE Events & Entertainment                          | Catherine Rogers                        | Diana Matherne                               |
| AFX/Pro Suzanne and David Spears                   | Catherine Saia                          | Diane and Steve Cory                         |
| Alana and Michael Karam                            | Champagne Beverage Company              | Donahue Favret Contractors                   |
| Alexander Stolin and Mary Kay Holmes               | Charrette Design Group                  | Donald M. Fendlason                          |
| Alexis and Todd Ducorbier                          | Cherry Figueroa                         | Donna and Norman Saurage                     |
| Alexis Ducorbier Insurance Agency                  | Cheryl Peters                           | Donna and Tom Anderson                       |
| Alice McNeely                                      | Chevron Products Company                | Donna S. Breaux                              |
| Alicia and Eric Irmischer                          | Chris Abide                             | Dorothy L. Blossman Charitable<br>Foundation |
| Alliance Safety Council                            | Christ Episcopal Church                 | Dorothy Noriea                               |
| Allison and Will Trist                             | Christel Slaughter                      | Doyle Coatney                                |
| Ally Carter  | Christine Talley                        | Edward Layrisson                             |
| Amanda and Heath Rushing                           | Christopher Moody                       | Edward Poitevent                             |
| Amy and Scott Day                                  | Christwood Retirement Community         | Eileen J. Bruno                              |
| Angelea and Dave Kronlage                          | Christy Ross                            | Elaine Simmons                               |
| Angie and Michael de la Houssaye                   | Chuck N. Sabadie, Jr.                   | Elaine Wirth                                 |
| Argiro Morgan                                      | Cindy and Bo Sibley                     | Elizabeth and Charles Goodyear               |
| Art Time   | Cindy and Kirk Williamson               | Elizabeth and Lee Newman                     |
| AT&T   | Cindy and Michael Harlan                | Elizabeth McBurney                           |
| Bank of America Charitable Foundation              | Cindy and Robert Shelton                | Elizabeth W. Wiedemann                       |
| Baptist Community Ministries                       | Cindy Fandal                            | Elizabeth Walther                            |
| Barbara and George Barnes                          | City of Covington                       | Ellie and Bernard Fromherz                   |
| Barbara Brocato                                    | City of Hammond                         | Ellis Sampson                                |
| Baton Rouge Area Foundation                        | City of Mandeville                      | Enid Poole                                   |
| BeBe and Walter M. Babst                           | City of Slidell                         | Enviro-Tech Systems                          |
| Becky and Joe Jaeger                               | CJ and Keith Ladner                     | Erin and Patrick Berrigan                    |
| Beth Gibson  | Cleco Power                             | Erna and Boots Hoffman                       |
| Betty and Jean Champagne                           | Clelie Scott                            | Esther Livaccari                             |
| Beverly Baker Gariepy                              | Coffee Rani/Little Sisters of Covington | Facebook                                     |
| Beverly McQuiad                                    | Columbia Road Land Company              | Family Wealth Management                     |
| Beverly Sheridan                                   | Connie and Larry Galloway               | Fannie Mae                                   |
| Bill Barry   | Consolidated Resource Management        | FARA Insurance                               |
| Bill Potter  | Corey Tullier                           | Fay and Phelan Bright                        |
| Billie and Mike Carpenter                          | Courtney and Lance Caulfield            | Fidelity Bank                                |
| Bippo's Place for Smiles                           | Courtney Gustin                         | Fire & Safety Commodities                    |
| Blake Landry                                       | Covington Powersports                   | First Community Bank                         |
| Blue Cross and Blue Shield Louisiana<br>Foundation | David Goodyear                          | First Guaranty Bank                          |
| Bonita and Randy Waesche                           | David and Suzanne Stymiest              | First Horizon Bank                           |
| Boudreaux Jewelers                                 | David C. Roussel                        | First Premium Group                          |
| Brenda Case  | David C. Treen                          | First United Methodist Church of Slidell     |
| Burris & Six CPA                                   | David Fennelly and Carlos Sanchez       | Florida Marine                               |
| Business First Bank                                | David Hoffman                           | Florida Parishes Bank                        |
| BWB Advisors                                       | Dawn Harkins Insurance                  | FMOL Health System                           |
| Capital One Bank                                   | Dawn LaRocca                            | Fran Harvey                                  |
| Carl and Cheryl Schneider                          | Debbie and Alexis Hocevar               | Gail and Henry Hood                          |
| Carla and Steve Mouton                             | Deborah White                           | GALAM  |
|  | Debra and Stuart Ethridge               |  |

Georgia and Nick Trist  
 Gerald L. Foret  
 Gia Maione Prima Foundation  
 Glenda and Bill Dobson  
 Gloria and Authur Bell  
 Gordon and Mary Wadge  
 Gradon Clemons  
 Grant P. Gravois Insurance Agency  
 Grant's Gift Foundation  
 Greater Starlight Baptist Church  
 Greg Lemons  
 Gulf Coast Bank & Trust  
 Gulf States Real Estate  
 Gwendolyn Wade  
 H2O Systems  
 Harry Zimmerman  
 Heather Mahoney  
 Helen Heebe Cooper  
 Hien Giang  
 Holly Schwartz  
 Honda of Covington  
 Hornbeck Offshore Services  
 HUB International  
 Humana Inc  
 IBERIA Bank  
 Innovative Advertising  
 Inside Northside Publishing  
 International Paper  
 Irma S. Cry  
 J. Steele  
 Jackie Griffith  
 Jacqueline "Jinx" Vidrine, Ph.D.  
 Jaie and Howard Daigle  
 James P. LeBlanc, Jr.  
 James R. Willis  
 Jamie Wetekamm  
 Jan and Gayden Robert  
 Jan and Gus Kuntz  
 Jane and Bill Slatten  
 Janice and Ed Amar  
 Jared Falcon  
 Jared Rodrigue  
 Ja-Roy Pest Control  
 Jeanne and JC Martin  
 Jeffrey L. Marshall  
 Jenifer and John Besh  
 Jennifer and Jerry Lambert  
 Jennifer and Ryan Orgeron

Jennifer Buras  
 Jennifer Colgan  
 Jennifer Fiorella  
 Jennifer Lee  
 Jennifer Rice  
 Jennifer Scharfenstein  
 Jenny and Frank Saxton  
 Jessica Hooper  
 Jill and Clark Heebe  
 Jill Donaldson  
 Joan Keller  
 Joann Dunn  
 Joe Luquet, Jr.  
 Joel Bruno  
 Johanna Averill  
 John H. Musser, IV  
 Johnell and Mark Grayson  
 Jones Fussell, LLP  
 Joseph Ball  
 Joyce and Ellis Magee  
 Joycelyn L. Nash  
 JP Morgan Chase Bank  
 Judy and Sam Camp  
 Julie and Drew Jardine  
 Julie and John Bevington  
 Julie and Steve Holzhalb  
 Juliet and Charles Jackson  
 Junior League of Greater Covington  
 K. Thomas Bubrig  
 K.B. Kaufmann & Co.  
 Kallie Kerne  
 Kanwal J. Dhir  
 Karl Zollinger  
 Kathleen Cyr  
 Kathleen Wilkin/Safeguard Printing  
 & Promo  
 Kathryn Gutterman  
 Kathy LeBlanc  
 Kathy Seiden  
 Katie Vallery  
 Kehoe France Northshore  
 Kellie and Sammy Gagliano  
 Kellie Brame  
 Kelly and Mason Rudolph, Jr.  
 Kelly B. Elliott  
 Kelly McHugh  
 Kendra and Kyle France  
 Kids Wanna Help

Kim and Chris Kenny  
 Kim and Robert Crosby  
 Kimberly Hollard Brechtel  
 Kitty Cleveland Rogers  
 Krebs, LaSalle, LeMieux Consultants  
 Krista and Tim Carpenter  
 Laborde Products  
 Lakeview Regional Medical Center  
 Laura and Baldwin Brown  
 Laurie and Nick Panzeca  
 Laurie and Wayne McCants  
 Lavigne Oil Company  
 Lawrence C. Paddock  
 Leslie and Chris Landry  
 Lillian and Jimmy Maurin  
 Linda Crowe  
 Linda Larocca  
 Lisa and Greg Pellegrini  
 Lisa and Peter Wilson  
 Livaudais and Livaudais  
 Lori and Larry Rase  
 Lori and Rick Murphy  
 Louisiana Lottery Corporation  
 Lovelle and James Blitch  
 Lowry-Dunham, Case, & Vivien  
 Insurance Agency  
 Lynn Smith  
 M. L. Waller  
 Madeline LeBlanc  
 Magee & Devereux Attorneys At Law  
 Manny Perez de la Mesa  
 Marcia Holmes  
 Marian and Bruce Margetson  
 Marilyn Wenzel  
 Marjorie A. Morrison  
 Martha and Mark Joslin  
 Marti J. Livaudais  
 Martis Jones  
 Marty Mayer  
 Mary and Kevin Gardner  
 Mary and Nick Gilliam  
 Mary Jane and John Becker  
 Mary Louise Prudhomme  
 Mary Queen of Peace Church  
 Mastio Family  
 Maura and Jack Donahue  
 Maureen Clary and Peter Link  
 Mayson Foster

Medline Industries  
 Mele Printing  
 Melissa and Craig Parette  
 Melissa and Kevin Levine  
 Mercedes-Benz of Covington  
 Merlin Duke  
 Merrill Lynch & Company Foundation  
 Metairie Bank & Trust Company  
 Michael D. Conroy  
 Michael J. Saucier  
 Michael McNulty  
 Michael Willis  
 Michelle and Rowland Stalter  
 Michelle Partridge  
 Mikaela and T. C. Ford  
 Mike Burris  
 Mimi and Bill Dossett  
 Money Hill Plantation  
 Monty Montgomery  
 Moody & Johnson Attorneys At Law  
 Mooney and Harvey O'Neil  
 Mumford Family Foundation  
 Nancy and John Baldwin  
 Nancy and Ron Lee  
 Naz and Jay Butcher  
 Neill Corporation  
 Nelia Durham  
 Netchex  
 Network for Good  
 Newell Andry  
 Nikki and Damon Duke  
 NMD, Inc/Bondilyn J. Jolly  
 NOLA Lending Group  
 Norma and Louis Gavin  
 Norma and Todd Richard  
 North Oaks Health System  
 Northshore Broadcasting  
 Northshore Business Council  
 Ochsner Health System  
 Olivet  
 P & W Industries  
 Pam and Norman Voelkel  
 Pam and Robin Mingo  
 Parish Concrete  
 Pat Graves  
 Patricia Brister  
 Patti and Gary Elish  
 Patti Tregle

Patty and John J. Finan  
 Paul Morris  
 Paula and Brett Davis  
 Paula Greenland  
 Planet Kids Pre-School and Academy  
 Poitevent Interests  
 PricewaterhouseCoopers LLP  
 Rachel and Kyle Entzel  
 Randy and Tami Spinosa  
 Randy Aultman  
 Raymi Anderson  
 Raymond M. Sanders  
 RCI – Rotolo Consultants  
 Regina Wilkins  
 Resource Bank  
 Rex Cabaniss  
 Rhonda and Hugh Bagby  
 Rick S. Danielson  
 Ron Newson  
 Rose G. and William H. Roe  
 Rose M. Dunn  
 S & W Wholesale Foods  
 Sally and Dick Knight  
 Sandra Cashe  
 Sandy and Claude Bloom  
 Sandy and Ron Franco  
 Scott Chotin  
 Scott Gutterman  
 SCP Distributors  
 Sharon and Arthur Bell  
 Sharon and Calvin Brasseaux  
 Sharon DeLong  
 Sharron and Bill Newton  
 Skillstorm Commercial Services  
 Slidell Memorial Hospital  
 Slidell Youth Soccer Club  
 St Tammany Parish Coroner's Office  
 St Tammany SALT Council  
 St. Andrew's Village  
 St. Anselm Church  
 St. Tammany Chamber of Commerce  
 St. Tammany Parish Government  
 St. Tammany Parish Hospital  
 St. Tammany Parish Library  
 St. Tammany Parish School Board  
 St. Tammany Parish Tourist and  
 Convention Center  
 Stacey and Brent Brown

Stacey and Mike Rase  
 Star Physical Therapy  
 Star Service  
 State Farm Insurance  
 Stephanie A. Weeks  
 Stephanie and Greg Berault  
 Stirling Properties  
 Stone, Pigman, Walther, Wittmann  
 & Hutchinson  
 Sue and Tom Lavin  
 Sue Cheveallier  
 Susan and Alan Zaunbrecher  
 Susan and Bill Baker  
 Susan and Danny Shaw  
 Susan and Mace Bourgeois  
 Susan and Rock Kendrick  
 Suzanne and Dan Durham  
 Sylvia and Grant Black  
 Synergy Glass Company  
 Tangipahoa Chamber of Commerce  
 Tara and Bryan White  
 Tara Ingram Hunter  
 Temple Inland  
 Terry King  
 The Azby Fund  
 The Benevity Community Impact Fund  
 The Berger Family  
 The Parette Family of Dealerships  
 Thomas Bubrig  
 Thrivent Financial for Lutherans  
 Tina and Rick Flick  
 Trilby and John Lenfant  
 Tyler Aymond  
 Venous and Arterial Surgery  
 Vince Hayward  
 Vincent Rizzo  
 Virginia and Franklin Morton  
 W B H Holdings  
 Walmart Distribution Center  
 Wendy and Steve Lauderdale  
 Weyerhaeuser Real Estate  
 Development Company  
 WHLC Architecture (LA)  
 Whole Foods  
 William Heuer  
 Willie Parette  
 Zachary Goodyear  
 Zella Walker





Inspiring philanthropy for 15 years by empowering you to connect with the causes that matter most, the Northshore Community Foundation works to unite human and financial resources to enhance the quality of life in the Northshore region, including St. Helena, Tangipahoa, Washington and St. Tammany parishes.

# fifteen

Our hard-working team is constantly looking for ideas and programs that get more people involved, inspired and empowered.

Susan Bonnett Bourgeois - President/CEO

Leslie Spencer Landry - Vice President

Jeanne Martin - Communications Director

Carla Mouton - Administrative Support Officer



Leslie, Susan, Carla, Jeanne

Like us. Love us. Tag us. Share us.



[northshorefoundation.org](http://northshorefoundation.org)

807 N. Columbia St., Covington, LA 70433 985-893-8757