



ANNUAL REPORT OF
IMPACT

NORTHSHORE COMMUNITY FOUNDATION 2017

mission

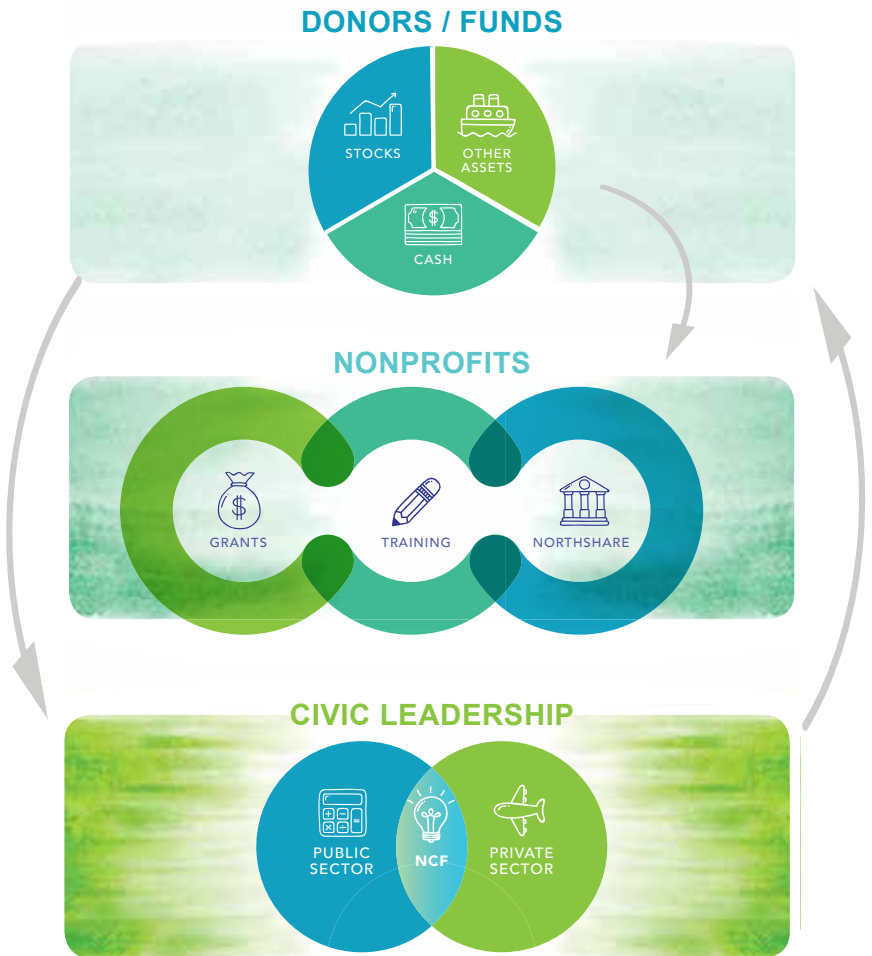
The mission of the Northshore Community Foundation is to unite human and financial resources to enhance the quality of life on the Northshore. To achieve this we:

Serve **DONORS**

Support **NONPROFITS**

Drive **CIVIC LEADERSHIP**

How it works





Board of
directors

2017 BOARD

Will Boudreaux - Chair
Scott Gutterman - Vice Chair
Mimi Dossett - Secretary
Greg Pellegrini - Treasurer
William "Bill" Baker
Fay Bright
Joel J. Bruno Jr.
Mayson Foster
Joseph A. Jaeger Jr.
Chip Lavigne
Suzanne K. Lavin
Ron Newson
Craig A. Paretti Jr.
Danny Shaw
Lisa Wilson

CHAIRMAN'S COUNCIL

Maura Donahue
James E. Maurin
Todd Richard

**2018 INCOMING
BOARD OF DIRECTORS**

Patti Elish
Chris Kenny
Marty Mayer

LEAD

**In addition to our board,
we would also like to thank
the following for their
significant contributions to
the Foundation to support
the work we do in our
communities.**

AT&T
Baptist Community Ministries
Baton Rouge Area Foundation
Chevron
CLECO
David Fennelly & Carlos Sanchez
Donahue Favret Contractors
Doyle Coatney
Fire & Safety Commodities
Humana
Lakeview Regional Medical Center
Inside Northside
Netchex
Ochsner Health System
P&W and Parish Concrete
PoolCorp
Stirling Properties



CLECO FUNDED PLAYGROUND EQUIPMENT AT THE HEAD START EARLY LEARNING CENTER IN SLIDELL



The power of
giving
through Corporate
Responsibility

The Cleco Corporation has a long history of robust philanthropic involvement in the communities it serves. But what CLECO knows best is power. With an interest in maximizing the impact of their philanthropy, the CLECO team looked to partner with the experts in giving, so they could focus on doing what they know best.

The CLECO Community Fund was established to manage a competitive grant-making process to ensure the impact of the company's philanthropic investment. The fund sought to make grants in the areas of education, youth programming, low income populations and health and wellness and specifically looked to advance organizations that valued transparency, integrity, accountability and demonstrated impact on their mission.

\$44.4

MILLION IN PHILANTHROPIC FUEL
MOVED BY THE FOUNDATION
SINCE INCEPTION

funds

by the numbers

11.75%

GROWTH OF PHILANTHROPIC
INVESTMENT POOL
IN 2017

\$8.1m

NEW PHILANTHROPIC
DOLLARS INVESTED IN
THE NCF IN 2017

106

NUMBER OF UNIQUE
FUNDS SERVING
DONOR NEEDS

\$225k

IN SCHOLARSHIP
MONEY TO 14 STUDENTS
IN 2017

\$2.9m

GRANTS IN 2017



donor advised funds

On the Northshore, we are generous people and we support the causes that matter to us—and we get asked to give. Often. So how do you make those choices and manage the details in a way that feels effective and impactful?

DONOR DRIVEN
INTERNATIONAL
GRANT TO THE
LUCIA DE CONZ
FOUNDATION
IN ITALY FOR
CULTURAL
IMMERSION
WORK.

A Donor Advised Fund (DAF) allows donors to make tax deductible contributions of cash, stock, real estate, business interest or other assets and make distributions from their fund in their own time, now and forever. No further accounting, no messy record keeping, that's all on us. Our DAF holders just support the charities that matter to them and we do all the work. The balance of their fund is invested and can grow over time. Donors have access to the expertise of the Foundation staff, they maximize their impact and minimize their work.

Few understand the power of mother nature better than folks in South Louisiana, and no one better understands the power of a helping hand. The good people of Texas have always rallied when we were on our knees, so when our neighbors to the west were devastated by Hurricane Harvey, we stepped in to return the favor.

Neighbors in need

The **Hurricane Harvey Relief Fund** raised more than \$135,000 with the bulk of those dollars funding “*One Million Meals*” an effort of Blue Runner Foods to provide quality meals to hungry, flooded Texans. Following the generosity and leadership of the company CEO Ricky Thomas, local donors gave generously to fund and deliver ten 18-wheeler trucks of canned red beans and rice to Houston area food banks in the days and weeks following the floods. In addition to food, the Harvey Fund supported animal rescue efforts and emergency support for populations that had nowhere else to turn.



A TOTAL OF 152,364 CANS OF BEANS AND 84,000 POUNDS OF RICE WERE DONATED AND DELIVERED.

**\$3.7
million**

TOTAL DISASTER
PHILANTHROPY
DOLLARS ALLOCATED
TO EMERGENCY
RELIEF EFFORTS SINCE
INCEPTION



STAKEHOLDERS TURN OUT FOR THE LAUNCH OF EXCEPTIONALLIVES.ORG AT THE FOUNDATION.

Exceptional lives

300k

VISITORS TO
THE NEW SITE
IN 2017

We have a long history of partnerships within the disability community and what we have seen time and time again is that families need support, especially after receiving a diagnosis. They are starting a journey that requires them to make difficult choices and to find critical resources. They have a constant need for trustworthy assistance, so they can act on behalf of their children.

In conjunction with our partners at the Baton Rouge Area Foundation, we launched LA.ExceptionalLives.org - A free interactive website that helps parents and caregivers find resources to get the services they need to help their children with disabilities. The site's 'How-To' Guides walk parents through complicated and often overwhelming processes while the 'Resource Directory' provides information on more than 1,000 resources.

MORE THAN 1500 PEOPLE AND
55 ORGANIZATIONS USED OUR
NORTHSHORE FACILITY IN 2017.



Nonprofit service

Since opening our doors, we have been committed to helping our regional nonprofit partner organizations thrive as they work to serve our communities and our people. We offer expert guidance and a wide array of philanthropic support services designed to increase an organization's ability to focus on it's mission and therefore have a greater impact on our region.

Complicated gift acceptance, cost effective investment solutions, training and shared space are just some of the services we offer our partners... That's in addition to writing them checks.



\$14.7
million

PARTNERING NONPROFIT
DOLLARS PARTICIPATING IN
OUR INVESTMENT POOL



\$1.7
million

GAIN FOR THOSE
INVESTMENTS
LAST YEAR

Dick Knight award

Richard F. "Dick" Knight was a founding Board member of the Foundation and his steady leadership and commitment to service were invaluable assets to our organization and the entire region. To honor his service and legacy, we created the Dick Knight Award to recognize and reward tremendous commitment in the nonprofit sector.



The First Annual Dick Knight Award was given to **Dianne Baham**, long time Executive Director of STARC. In 1972, under Dianne's leadership, STARC began serving three children in St. Tammany Parish in a donated facility, with two staff members and a budget of \$2,500. Today, STARC serves more than 1,000 individuals and their families at any given time, throughout the Florida Parishes at 13 different sites with more than 330 staff members and a \$7.9 million dollar budget.



Dick Knight Award

COMMITMENT • COMMUNITY • CHARACTER

THIS AWARD IS MADE POSSIBLE
BY RESOURCE BANK, THE PRIMA
FOUNDATION AND THE
FUND FOR BOGALUSA.



Who are we and
where are we
going?



"North of Your Expectations" - The Northshore is one of those rare places that combine quality of life with accessibility, a progressive business climate with natural beauty, and vibrant culture with community. For those who love Louisiana's way of life, there's no place better. Come exceed all expectations on the Northshore.

"NORTH OF YOUR EXPECTATIONS" CAR CLINGS ARE ALL THE RAGE. REGIONAL BRANDING AND PRIDE!

For the last three years, the Foundation has led a community-based process to develop a vision and identity for the Northshore region as we grow and evolve. The next step in that process is to identify and promote our regional brand, to create a sense of place to be embraced by locals and intriguing to outsiders. We think this nailed it.



600k

PROJECTED NUMBER OF PEOPLE LIVING IN OUR NORTHSHORE REGION BY 2030. THERE ARE 450,000 LIVING HERE TODAY.

Why it matters

The Northshore Community Foundation aims to serve our community as a whole. Each of the stories highlighted throughout this report reflects how the foundation exists to evaluate and coordinate the needs and services in our area, so that charitable gifts are used effectively to fulfill our community's most critical needs.

- Local nuns needing a tractor to cut their grass
- An unexpected autism diagnosis
- A single mother's home flooding twice in one year
- Tuition for a low-income student not expecting a chance at higher education

THIS IS WHY A COMMUNITY FOUNDATION MATTERS

Will you play a role in creating impact and meaningful change?

NorthshoreFoundation.org



How can you get

involved?



INVEST IN OUR WORK



ESTABLISH A FUND



SPREAD THE WORD

NORTHSHORE

807 N. COLUMBIA ST.
COVINGTON
LOUISIANA 70433
985.893.8757



Like us. Love us. Tag us. Share us.



NorthshoreFoundation.org